

orion AGRISCIENCE



HARMFUL | ECOTOXIC

KEEP OUT OF REACH OF CHILDREN

CorsairTM
HERBICIDE

For the control of broadleaf weeds in
PASTURE

Active Ingredient:

490 g/litre 2,4-D as the dimethylamine salt and 10.4 g/litre of flumetsulam in the form of a soluble concentrate



20 Litres



PLEASE READ THE LABEL COMPLETELY BEFORE USE



HAZARD CLASSIFICATIONS: 6.1D, 6.3B, 6.4A, 6.5B, 6.9A, 9.1A, 9.2A, 9.3B

DANGER: HARMFUL, ECOTOXIC

May be harmful if swallowed, inhaled or absorbed through skin. May cause mild skin irritation. May cause serious eye irritation. May cause an allergic skin reaction. May cause organ damage through prolonged or repeated exposure. Very toxic to aquatic organisms with long lasting effects. Very toxic to some plant species (selective herbicide). Toxic to terrestrial vertebrates.

PRECAUTIONS

Keep out of reach of children. Avoid contact with eyes and skin. Do not breathe in the spray mist. Do not eat, drink or smoke during use. Wash hands after use.

STORAGE

Store in the original tightly closed container in a secure area. When stored appropriately this product should show no significant degradation for two years from the date of manufacture. Contact your supplier for further information about the use of product that is older than this.

PROTECTIVE EQUIPMENT

When mixing or applying, wear chemical resistant overalls, boots, gloves, and eye protection. Wear a respirator if spray mist could be inhaled. Clean protective equipment after use. Do not take contaminated equipment or clothing off site. Wash contaminated clothing before reuse.

USE

Apply with well maintained and calibrated spray equipment. Application must be by a qualified loader, contractor or person.

DISPOSAL

Dispose of this product by using it in accordance with this label. Dispose of the container via AgRecovery after triple rinsing (use the rinsate for spraying). Do not burn. Do not use the container for any other purpose.

ENVIRONMENTAL

Take all reasonable steps to ensure that this product does not cause any significant adverse effects to the environment beyond the application area. Do not allow spray drift outside the target area to occur. Spray drift or equipment contamination may cause serious damage to desirable plants and susceptible crops such as vegetables, flowers, fruit trees, ornamental shrubs, grapes and tomatoes. Take steps to prevent spray drift or application to non-target plants. Spray in a constant light breeze that is away from sensitive areas. Do not use the same equipment to apply other chemicals to susceptible crops unless thoroughly decontaminated. Do not apply directly into or onto water. In the event of spillage, exclude non-essential people from the area. Wear protective equipment and prevent from entering drains. Contain and collect spillage for disposal.

First Aid

If medical advice is needed, have product container or label at hand.

If swallowed: Rinse mouth. Seek medical advice if feeling unwell.

If on skin: Wash with plenty of soap and water. Seek medical advice if irritation or rash occurs.

If in eyes: Rinse cautiously with water for several minutes. Remove contact lenses, if easy to do so. Continue rinsing. Seek medical advice if irritation persists.

If inhaled: Remove to fresh air and keep at rest in a position comfortable for breathing. Seek medical advice if feeling unwell.

For advice, call the Poisons Centre on **0800 POISON (0800 764 766)** or a Doctor.

Emergency Response

In a transport emergency call **111, Police or Fire Brigade**. For specialist advice in an emergency only, call **0800 CHEMCALL (0800 243 6225)** (24 hrs).

Safety Data Sheet

Additional information is provided in the safety data sheet. Freephone **0800 ORIONAS (0800 674 6627)** or visit www.orionagriscience.co.nz

Registered pursuant to the ACVM Act 1997, No. P9539

See www.foodsafety.govt.nz for registration conditions.

Approved pursuant to the HSN0 Act 1996, No. HSR101340

See www.epa.govt.nz for approval conditions.

™ CORSAIR and SYNOL are Trade Marks of Orion AgriScience Ltd

Registrant: Agsin Pte Ltd, Zagro Global Hub, 5 Woodlands Terrace, Singapore 738430

Distributor: Orion AgriScience Ltd, Unit 1, 15 Sir Gil Simpson Drive, Harewood, Christchurch 8053
www.orionagriscience.co.nz

Batch No.

Date of Manufacture

Corsair



AGRISCIENCE

0621



PLEASE READ THE LABEL COMPLETELY BEFORE USE

GENERAL INFORMATION

Corsair is a non-volatile selective herbicide for control of a range of broadleaf weeds in new and established pasture. Best results are obtained when weeds are in the seedling stage of growth. Larger weeds and established biennial weeds may not be well controlled. Perennial weeds will not be well controlled. Corsair works best when crops and weeds are not under stress, e.g., from frost, drought, water logging, etc. Do not apply under these conditions.

APPLICATION METHODS

Corsair can be applied with conventional ground and aerial equipment. Use a water rate of 100 – 300 L/ha for ground spraying, 30 – 100 L/ha for aerial spraying. Use the higher water rates where weeds are dense. For ground application, ensure droplet size is no finer than medium. For aerial application, to minimise damage to susceptible vegetation within 500 metres, use low drift nozzles to ensure droplet size is no finer than coarse.

MIXING

Add the required quantity of Corsair to the spray tank partly filled with water, and maintain agitation through filling and spraying. Add Synoil last. Only mix sufficient spray solution for immediate use. Do not store spray solutions.

RAINFALL

Do not spray if rain is expected within 6 hours of spraying.

PASTURE MANAGEMENT

Corsair is damaging to all clovers, particularly red, subterranean and suckling clover. To minimise pasture damage, pasture must be grazed to reduce clover leaf and to expose target weeds. After grazing, leave for one week to allow weeds to recover before spraying.

Corsair is also damaging to chicory and plantain, and must not be used in pasture swards containing these herbs unless damage or removal is acceptable.

Do not spray hay or silage paddocks.

New Pasture: Corsair can be used in newly established pasture, but the maximum application rate should not exceed 2.5 L/ha. Clovers must have at least 3 trifoliolate leaves, and pasture must be grazed 3 – 7 days before application to remove clover foliage and minimise clover damage. Application to ungrazed seedling clover may result in some plant mortality. Clover growth will be suppressed for 3 – 4 months. Do not use where red, subterranean and suckling clover has been sown. Soils should have adequate nitrogen status.

SOIL RESIDUES

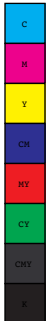
Do not plant susceptible crops within 3 months of application. Susceptible crops include all brassica species, beans, clovers, grasses, lupins and sunflowers. For grasses, do not plant within 4 weeks of application.

WITHOLDING PERIOD

It is an offence for users of this product to cause residues exceeding the relevant MRL in the Food Notice: Maximum Residue Levels for Agricultural Compounds

Do **NOT** graze treated pasture for 14 days after application.

Poisonous plants, e.g. ragwort, can become more palatable after spraying. For animal safety reasons, stock should be kept away from treated areas until any poisonous plants have died down



PLEASE READ THE LABEL COMPLETELY BEFORE USE

RESISTANCE MANAGEMENT

GROUP 01 HERBICIDE

GROUP B HERBICIDE

Corsair contains 2,4-D, which belongs to the phenoxy chemical group, and flumetsulam, which belongs to the triazolopyrimidines chemical group. Some naturally occurring weeds may become resistant when excessive use of the same herbicide occurs. To prevent or delay the development of resistance, use strictly in accordance with label instructions and resistance management strategies. Consult <http://resistance.nzpps.org/index.php> for alternative modes of action and details of resistance management strategies.

WARRANTY

This formulation is warranted to contain the specified active ingredient within accepted analytical tolerance when packed. The user bears the risk for damage resulting from factors beyond the manufacturer's control. The manufacturer declines all liability for damage resulting from improper storage or use of the product.

DIRECTIONS FOR USE

RATE AND TIMING OF APPLICATION

Always apply Corsair with a spraying oil such as Synoil™ at 1 L/ha

WEEDS CONTROLLED	RATE / ha (Litres)	CRITICAL COMMENTS
Amaranthus (Redroot), Black Nightshade, Cleavers, Fathen, Mallow, Shepherds Purse	3.8 - 5	Use the lower rate before 4th leaf stage, the higher rate on larger weeds
Apple of Peru	3.2	Apply to seedlings only
Bathurst Bur	2.5 - 3.2	Apply to seedlings only
Buttercup (Annual), Creeping Yellow Cress, Yellow Gromwell	3.8 - 5	Apply before flowering. Use the higher rate on larger weeds. May be applied in either spring or autumn for buttercup control
Catsear, Dandelion	1.6 - 3.2	Use the lower rate for seedlings, the higher rate for small rosettes
Chickweed, Hedge Mustard, Spurrey, Wild Radish	2.5 - 5	Use the lower rate before 4th leaf stage, the higher rate on larger weeds
Docks	4.1	Apply to young seedlings only (2 - 4 leaf stage). Will not control regrowth from root chips
Field Pansy, Herbit, Oxeye Daisy, Willow Weed	5	Apply to young seedlings (Suppression only)
Giant Buttercup	5	Apply before flowering. Repeat spring treatments for 2 successive seasons will maximise control
Nettles	2.5 - 4.1	Apply to seedlings and young plants only
Parsley Dropwort, Wild Carrot	4.1	Apply to seedlings only
Plantains	3.2 - 4.1	Use the lower rate for seedlings, the higher rate for small rosettes
Ragwort	3.2 - 5	Use the lower rate for seedling weeds, the higher rate for small rosettes. Larger rosettes or multicrowns will not be controlled.
Thistles (Nodding, Winged)	3.2 - 5	Use the lower rate for seedlings, the higher rate for rosettes
Thistles (Scotch)	1.6 - 3.2	Use the lower rate for seedlings, the higher rate for rosettes
Sorrel, Stinking Mayweed, Wireweed	5	Apply to young seedlings
Storksbill	2.5 - 5	Use the lower rate for seedlings, the higher rate for small rosettes.
Thornapple	5	Apply to seedlings only

Do not exceed the maximum application rate, and do not apply more than twice per year.

